

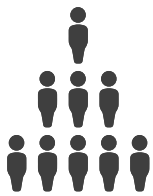


Peel Fast Facts

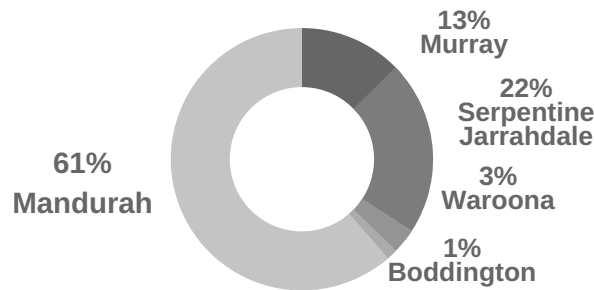
The Peel region is one of diverse physical features & unique ecosystems that provide the basis for the lifestyle Peel is known for. The population is growing rapidly presenting opportunities for innovation to meet challenges of employment, skills, industry growth, economic development and an ageing population.

Images supplied by MAPTO

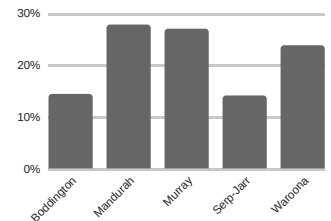
Our people



2017 population = 136,854
Growth rate of 5.4% 2011-2016
WA growth rate 2% 2011-2016



Peel's population is dispersed over 5 LGAs

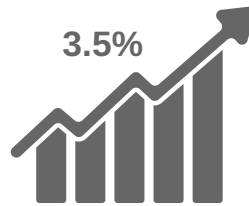


Our population is ageing with 24.8% of the overall Peel population over 60

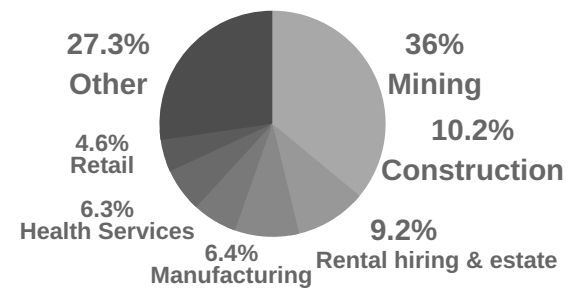
Our economy



Peel 2017 GRP = \$7.92 billion
3.2% of WA Gross State Product



Peel average annual GRP growth rate 2012-2017



Largest contributors to Peel GRP are mining & construction 2016

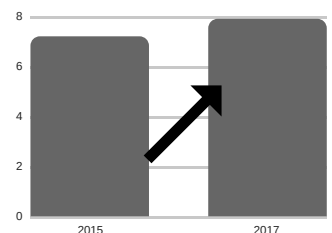
Our workforce



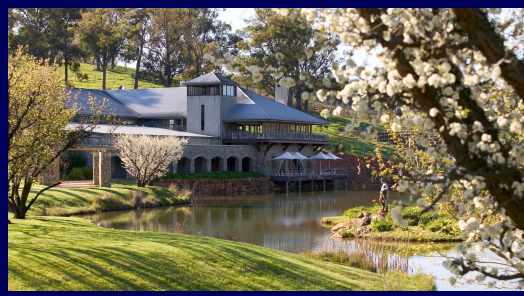
Workforce participation
60,474



50.9% of employed Peel residents work in Peel
25,900 residents work outside the region



Unemployment rose from 7.2% in 2015 to 7.9% in 2017 & peaked at 9.4% in Sep 2016



Our communities



Leveraged natural assets promoting Peel & its tourism capacity.
\$400m est. annual tourism spend



\$86 million is required to fund capital works to meet aged care accommodation demand

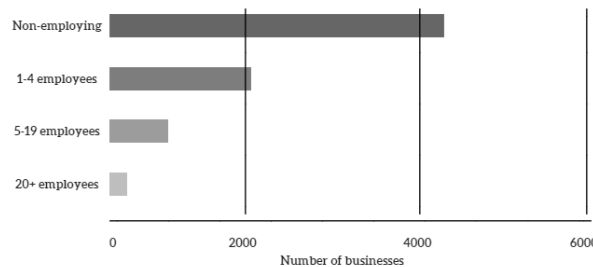


Working toward an improved education base.
Peel year 12 achievement = 40%
WA year 12 achievement = 54%

Our industries



Peel's largest employing industry is retail & health care & social assistance, followed by construction

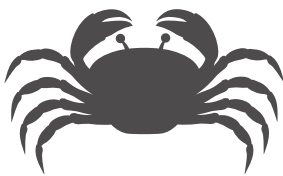


High number of non-employed businesses - localised economy

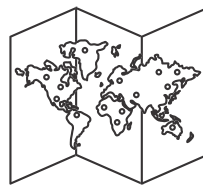


Agriculture, forestry and fishing account for 3.4% of Peel GRP

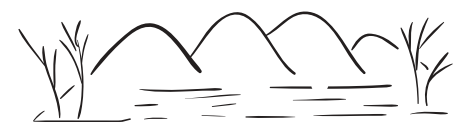
Our environment



The Peel-Harvey estuary is a major draw card for fishing, tourism, livability & investment



Tourism is a major growth market for the Peel - our goal is to attract 3 million day trips in 3 years



Internationally protected, Ramsar listed Peel-Yalgorup wetlands

The Peel region faces numerous challenges, including rapid population growth and the inherent need to balance economic and social development with environmental conservation. The key stakeholders of the region are actively collaborating to develop programs to address these challenges.

Images supplied by MAPTO

