



Department of
Primary Industries and
Regional Development



Peel: A regional profile



The Peel region is located 75 kilometres south of Perth. It encompasses five local government areas including the City of Mandurah and the shires of Boddington, Murray, Serpentine-Jarrahdale and Waroona. Mandurah is the urban centre of the Peel providing a range of medical, educational, communications, commercial and administrative services.

The Peel region is one of diverse physical features & unique ecosystems that provide the basis for the lifestyle Peel is known for. The population is growing rapidly presenting opportunities for innovation to meet challenges of employment, skills, industry growth, economic development and an ageing

population. Peel's landscape is geographically diverse with urban, agricultural and horticultural land, a forested escarpment and 50 kilometres of coastline. The Peel is a popular daytrip destination from Perth and offers a variety of attractions including beautiful beaches and many inland attractions near Dwellingup and Serpentine.

The Peel's economy is strong and diverse. It is dominated by mineral processing; the area has large reserves of bauxite, gold and mineral sands and two alumina refineries, at Pinjarra and Wagerup. Gold mining is strongest at Boddington, which has Australia's largest producing gold mine. The region is complemented by stable manufacturing and construction service industries, agriculture, tourism and retail trade.



Facts



Boddington produces around 8% of Australia's gold



Expected to be one of the **most populated outside of Perth**, with a projection of 444,000 by 2050



City of Mandurah is the **regional business hub**



Hosts the largest **Thrombolite reef** in the Southern Hemisphere



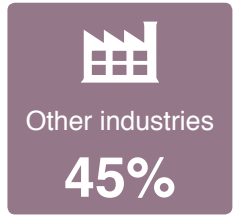
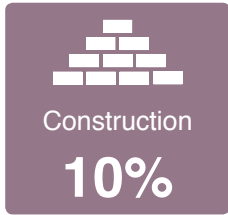
One of the **highest rainfall** areas of South Western Australia



Town of Pinjarra is one of the **oldest** in Western Australia

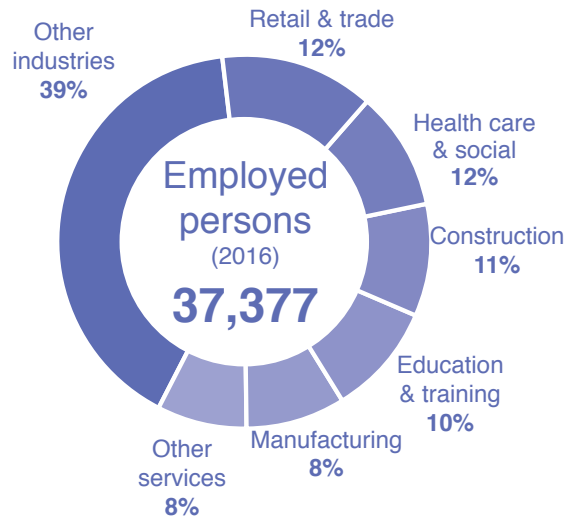
Figures

Economic

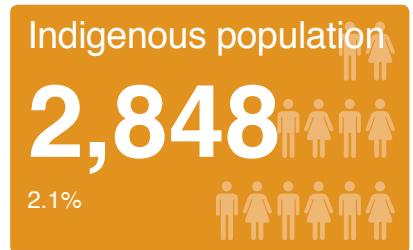


Source: DPIRD 2017 Gross Regional Product (GRP); ABS State Accounts (5220.0); ABS 2016 Census data.

Employment



Community



Source: Australian Bureau of Statistics (ABS) 2016 Census of Population and Housing



For further information on the Peel, contact:

**Peel Development Commission –
Department of Primary Industries and Regional Development**

45 Mandurah Terrace, Mandurah WA 6210

Phone: +61 8 9535 4140 | Email: peel@peel.wa.gov.au | Website: peel.wa.gov.au

Important disclaimer

The Chief Executive Officer of the Department of Primary Industries and Regional Development and the State of Western Australia accept no liability whatsoever by reason of negligence or otherwise arising from the use or release of this information or any part of it.

© Department of Primary Industries and Regional Development, 2018